

BUSSOLE - BUSHING BUCHSE - BAGUE

TIPO

TYPE

TYP

TYPE

TIPO

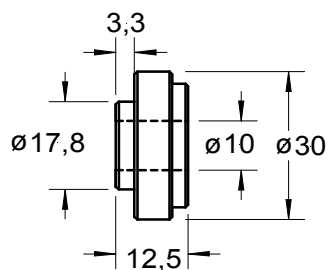
IMPIEGHI POSSIBILI

POSSIBLE UTILIZATION

MOGLICHE EINSATZBEREICHE

EMPLOIS POSSIBLES

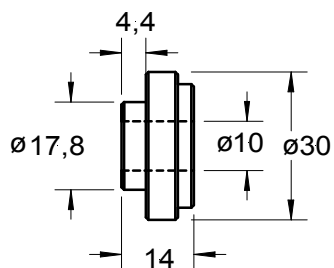
POSIBILIDAD DE USO



BCL 3

Boccola per coltelli
spessore 3 mm

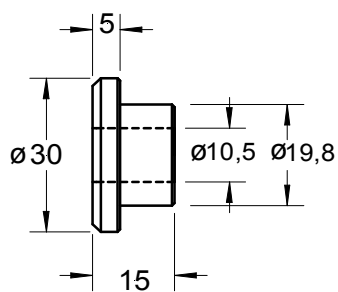
BISO 28.801.405.0012/3
J.DEERE Z.35216/3
CLAAS
NEW HOLLAND



BCL 4

Boccola per coltelli
spessore 4 mm

BISO 28.801.405.012/4
BISO 28.203.068.000
J.DEERE Z.51243/4
CLAAS
NEW HOLLAND



BCLI 4,5

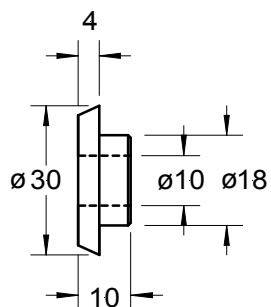
Boccola interna per
coltelli sp. 4,5

CASE 1322 242 C1
JHC

BUSSOLE - BUSHING BUCHSE - BAGUE

TIPO
TYPE
TYP
TYPE
TIPO

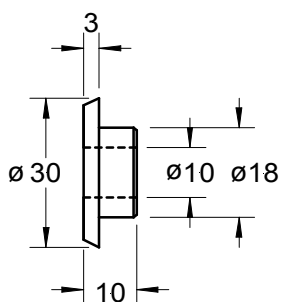
IMPIEGHI POSSIBILI
POSSIBLE UTILIZATION
MOGLICHE EINSATZBEREICHE
EMPLOIS POSSIBLES
POSIBILIDAD DE USO



BCLI 3

CLAAS 060.016.2

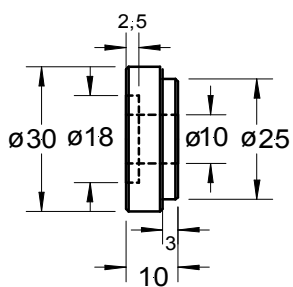
Boccola interna per coltelli
spessore 3 mm



BCLI 4

CLAAS 060.016

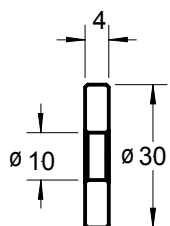
Boccola interna per coltelli
spessore 4 mm



BCLE 3 - 4

CLAAS 060.015

Boccola esterna per coltelli
spessore 3 - 4 mm



DIST 4

Distanziale

BISO 28.801.405.0013
CLAAS 736 870.1
J.DEERE Z 66313
(J. DEERE Z 35217)